

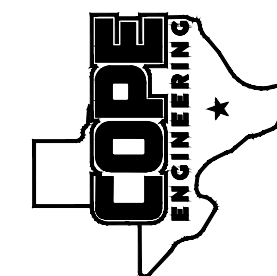
LOCATION MAP  
N.T.S.



INTERIM REVIEW  
Document incomplete:  
Not intended for permit,  
bidding, or construction.

ARCHITECT: Debra J.  
TX License Re Dock# 11930

COPE ENGINEERING, INC.  
8611 BOTTLER LANE  
SAN ANTONIO, TX 78217  
(210) 828-7070 OFFICE  
TEXAS REG. #F-16078  
WWW.COPEENGINEERINGTX.COM



DEBRA J. DOCKERY, ARCHITECT,  
P.C. 118 BROADWAY, SUITE  
SAN ANTONIO, TX  
78205  
FAX (210) 220-1588

GUADALUPE COUNTY  
APPRAISAL DISTRICT  
MARY ERSKINE BUILDING RENOVATION  
216 E COLLEGE ST  
SEGUIN, TEXAS 78155

REVISIONS  
TEXT

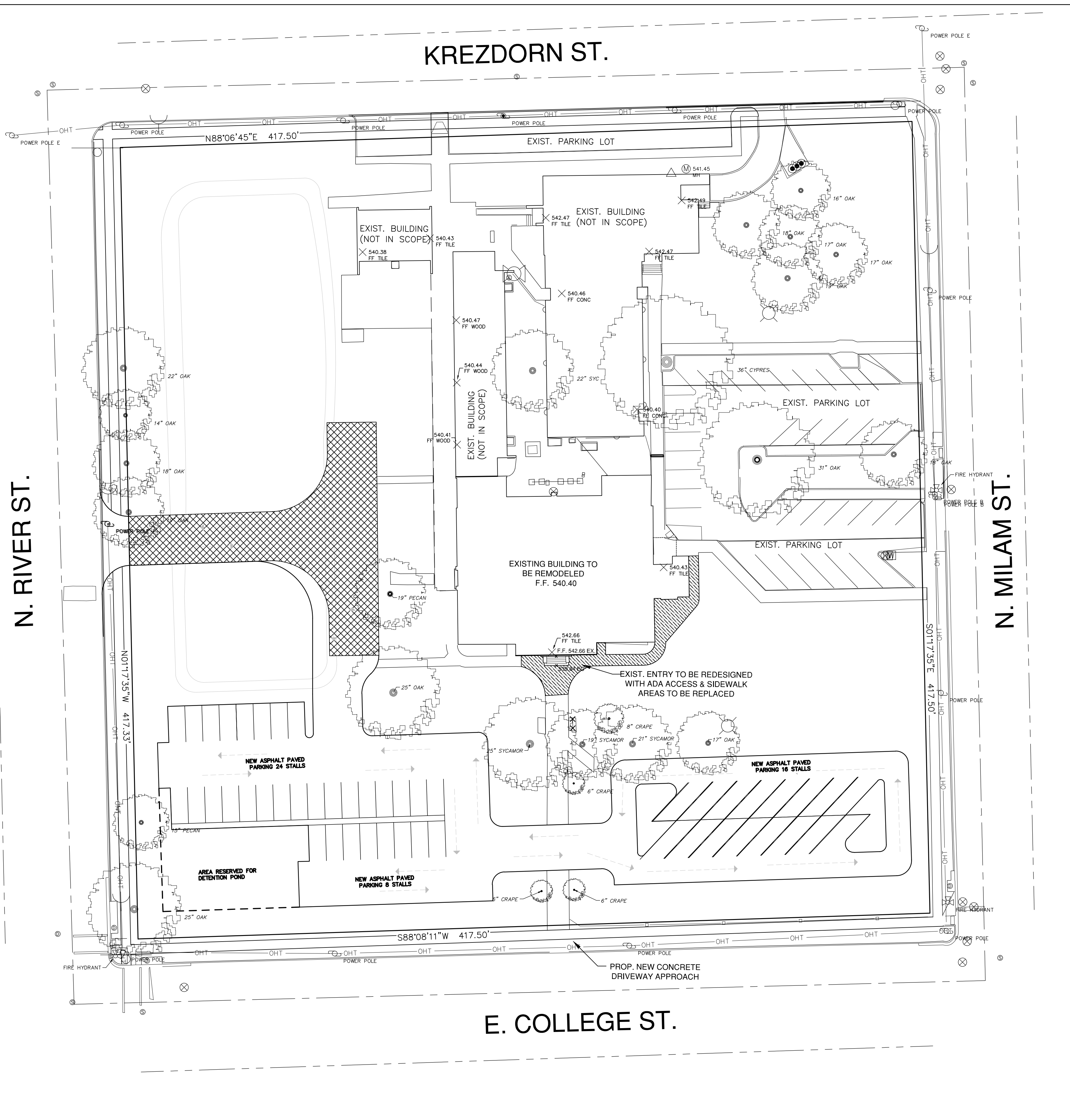
PROJECT NO.  
XX-XX

PHASE  
CONSTRUCTION  
DOCUMENTS

DATE  
FEBRUARY 2026

DESCRIPTION  
PROPOSED SITE  
PLAN

C2.0



LEGEND

- OHT — OVERHEAD TELEPHONE
- - - - - ROAD CENTERLINE
- - - - - R.O.W. LINE
- — — — — PROPERTY BOUNDARY