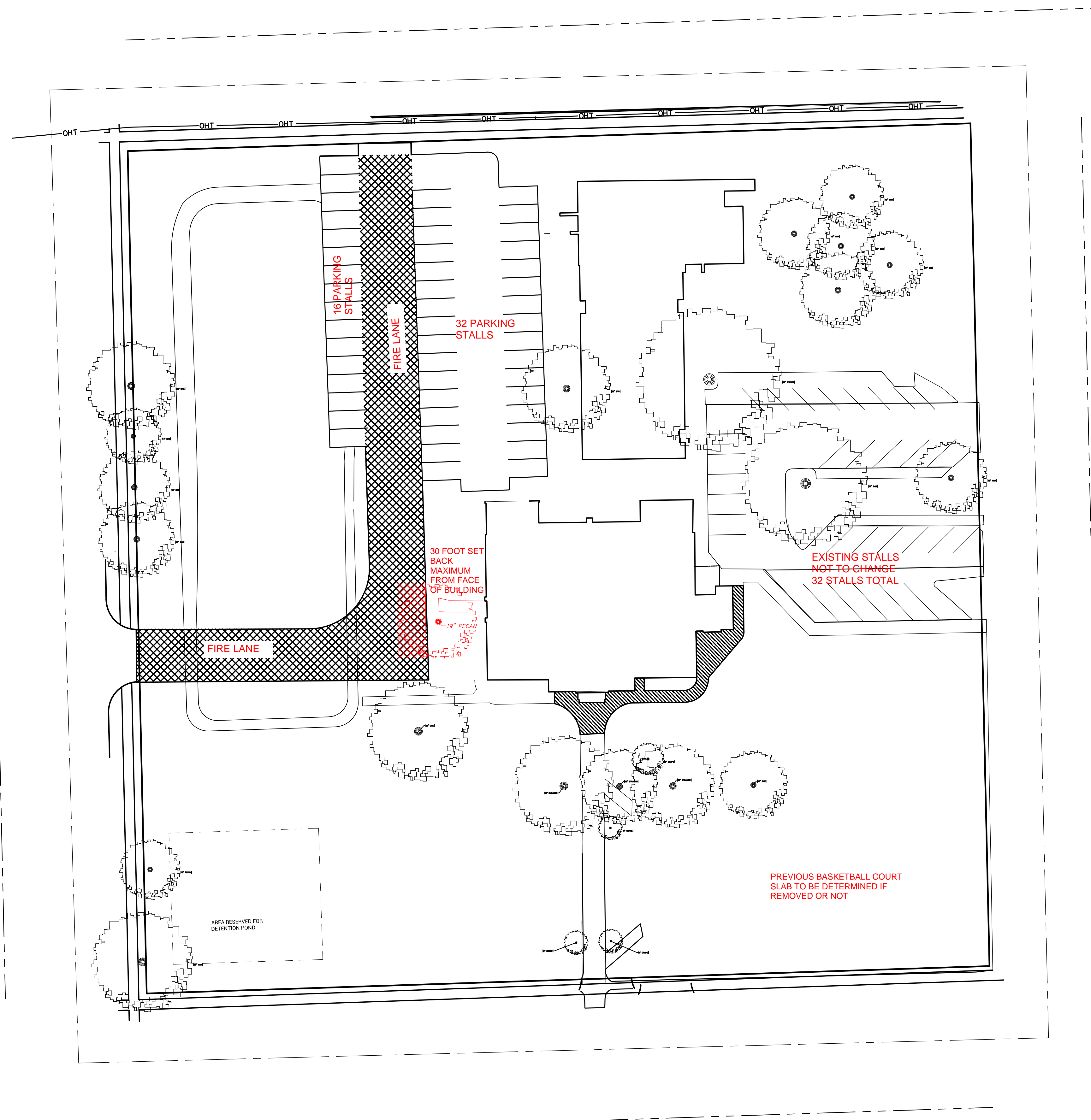


LOCATION MAP
N.T.S.



LEGEND

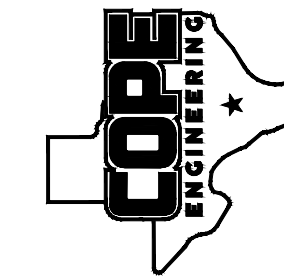
— OHT —	OVERHEAD TELEPHONE
— — — — —	ROAD CENTERLINE
— · — · —	R.O.W. LINE
— — — — —	PROPERTY BOUNDARY



INTERIM REVIEW
Document Incomplete:
Not intended for permit,
bidding, or construction.

ARCHITECT: Debra J.
TX License Re Dock 11930

COPE ENGINEERING, INC.
8611 ROTHSCHILD LANE
SAN ANTONIO, TX 78217
(210) 828-7070 OFFICE
TEXAS REG. #F-16078
WWW.COPEENGINEERINGTX.COM



DEBRA J. DOCKERY, ARCHITECT,
P.C. 118 BROADWAY, SUITE
SAN ANTONIO, TX
78205
FAX (210) 220-1588

GUADALUPE COUNTY
APPRAISAL DISTRICT
MARY ERSKINE BUILDING RENOVATION
216 E COLLEGE ST
SEGUIN, TEXAS 78155

REVISIONS
TEXT

PROJECT NO.
XX-XX

PHASE
CONSTRUCTION
DOCUMENTS

DATE
FEBRUARY 2026

DESCRIPTION
PROPOSED SITE
PLAN